

Intelli-Push™ System

Real-time Shelf and Inventory Management



800.422.2547 • www.siffron.com

siffron®
always on

Retail Displays that work 24/7 for Retailers



Benefits of the Intelli-Push™ System

The next step in the evolution of retail involves live reporting of on-shelf inventory levels, loss prevention monitoring, and product organization in real time. Information that is accessible 24/7 from a mobile or desktop device platform, with minimal set-up and wireless communication. sifron's Intelli-Push™ makes that next step a reality.

Intelli-Push™ utilizes a unique combination of intelligent retail fixtures from sifron, providing the ability to collect, catalog and monitor data to track inventory and restocking levels, assess loss and shrink, and aid in sales forecasting; all transmitted via wirelessly to connected devices.

The Intelli-Push™ System empowers retailers with insights from accurate data on traffic and customer buying behavior in stores, that can be used for better inventory management, rapid recovery and overall customer satisfaction.

SKU Organization at Display Level

Kwik-Set™ Pushers and Spiral Anti-Sweep Hooks keep merchandise organized, accessible, and shoppable for customers.

SKU-level Inventory Management

Receive real-time data regarding On Shelf Availability and back-stock replenishment inventory.

Dashboard Reporting

Get real-time analysis of merchandise by SKU, time, day, on-shelf availability, and store site.

Theft Prevention and Store Activity Monitoring

sifron's Intelligent Loss Prevention technology integrates with each shelf pusher and hook, monitors merchandise movement, and notifies store associates of activity using audible alerts. The system also sends all data to cloud-based store dashboards reports.

Multi-tiered Retail Intelligence

Intelli-Push™ uses proven retail technology to provide extraordinary benefits and insights to retailers. From the industry-best pusher system and intelligent loss prevention, to data management, Intelli-Push™ features everything retailers need to stay on top of their inventory and respond to customer buying behavior.

4. Connected Store Platform/Dashboard:

Pushes the stored data transmitted from the system hub (at store level) to cloud based software (mobile devices and dashboard). Store administrators have the freedom to create and manage virtual store locations POG's, and have access to actionable dashboard data. With the click of a button, identify and analyze strategic data to improve resource allocation, increasing sales.

3. Controller Hub:

An in-store hub that collects the data provided by the Echo Box and transmits that data to the siffron Intelli-Pusher dashboard/network platform.

2. Echo Box:

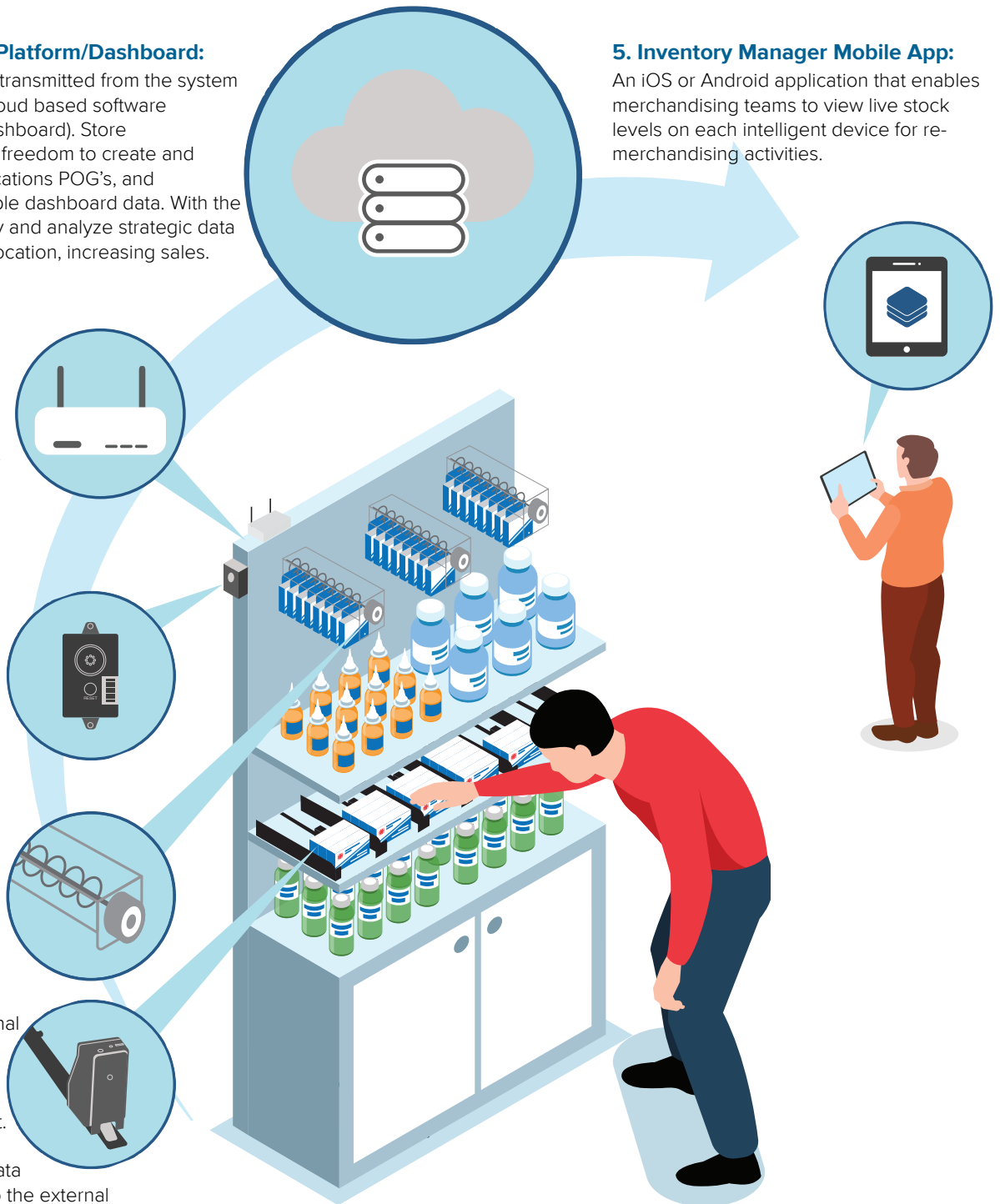
This box is positioned in proximity to the Intelli-Push fixtures, gathers the transmitted data from the fixtures, and sends that data to the connected wireless communications Controller hub.

1. Intelli-Push™ Fixtures:

Pushers or Hooks are installed for each SKU to be tracked. Wireless and battery powered, the fixtures are equipped with internal software/hardware to monitor travel, time, and activity of the merchandise movement. They include unique IDs for each unit, with data transmitted wirelessly to the external Echo Box.

5. Inventory Manager Mobile App:

An iOS or Android application that enables merchandising teams to view live stock levels on each intelligent device for re-merchandising activities.





8181 Darrow Road
Twinsburg, OH 44087

Intelli-Push™ Pusher System

Keeps products organized

Maintain product accessibility

Protect merchandise

Monitor merchandise movement and shopping activity.

Dashboard reporting

Get real-time analysis of merchandise by SKU.

Ordering is easy!

Phone **1.800.422.2547**
Fax **1.800.422.2502**
Web **www.siffron.com**

call toll-free in North America
fax us your purchase order
find and buy resources online